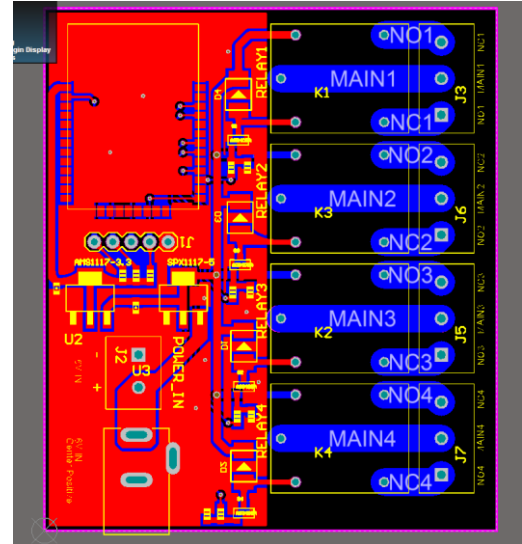
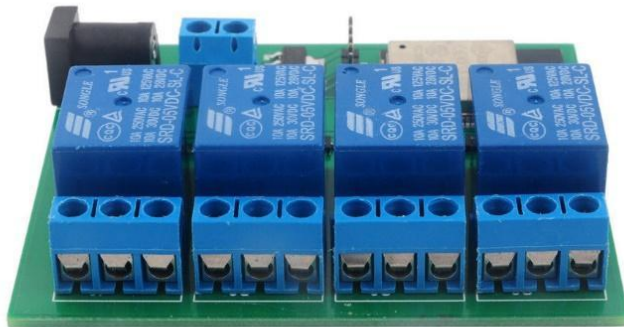


ESP32 ESP32S 4 CHANNEL WIFI BLUETOOTH RELAY MODULE FOR IOS IPHONE ANDROID



Description:

Input: 6V 0.750A

Relay capacity (per relay): 250Vac/10A, 125Vac/10A, 30VDC/10A

Relays: 4 independently controlled via ESP32

Interface: Bluetooth and Wi-Fi

The relays can be switched on and off individually via BLE or Wi-Fi connection. Upon startup, the module creates a WPA2 protected Wi-Fi access point and BLE server. Over Wi-Fi, the relay states can be controlled with a simple GET statement for easy integration with your applications. The Wi-Fi webserver provides a JSON interface for relay states. A Bluetooth GATT server is created and can be used concurrently with the Wi-Fi access point.

Wifi connection, the wifi name is TEST, password is 123456789

IOS APP: The "DIYMall Relay Control" app in the App Store and Play Store are able to control the relays both over Wi-Fi and Bluetooth

Android APP: <https://play.google.com/store/apps/details?id=me.stratux.relaycontrol>

Requires Android : 4.1 and up

Package Included:

1 X ESP32S 4 Channel Wifi Bluetooth Relay Module