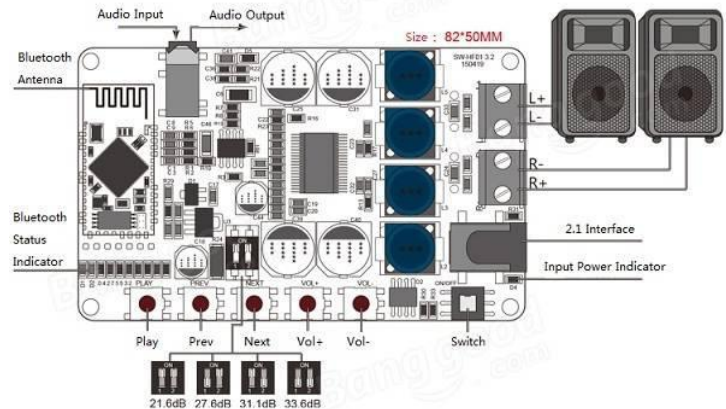


TDA7492P 50W+50W WIRELESS BLUETOOTH 4.0 AUDIO RECEIVER DIGITAL AMPLIFIER BOARD



Specification:

The 2x25 W board best fits 8 Ohm and 15W-25W loudspeaker.

Power: 2.1 interface 12V(Best) 8-24V DC power supply.

Audio input: Stereo input various versions of the Bluetooth connection, using CSR8630 Bluetooth chip, Bluetooth V4.0, high software compatibility.

Output Impedance:4/6/8/16Ω, impedance can drive speakers.

Chip: TDA7492P Thermal overload protection and short-circuit protection.

TDA 7492 digital amplifier chip, designed to optimize the circuit layout, the sound quality is very good ,big power.

Parameter:

Material: PCB

Color: Red

Digital Amplifier Board: 3.2 X 2.0 X 0.7 inches(L*W*H)

Protective Case: 4.0 X 2.7 X 1.0 inches(L*W*H)

Net Weight: 0.2 pounds

Note:

Attention! Drop or electric conductor touching circuit may cause IC burned, result in the lost of sound.

If you directly use Bluetooth, when power, wait 3s~10s, until led Blue and Red light flashing alternately, then you can use your device to find my Bluetooth module, you will find "SANWU Audio", then connect it, can directly use it. Remember back to even.

If you use extral audio,you need connect 3.5mm audio line.

Package Included:

1 x INSMA Digital Amplifier Board